

GPx-FM Series

Full Service Electric Fire Pump Controllers

Models:

GPA-FM - Full voltage across the line starter

GPS-FM - Reduced voltage electronic soft starter

GPY-FM - Reduced voltage y-delta open starter

Standard Features

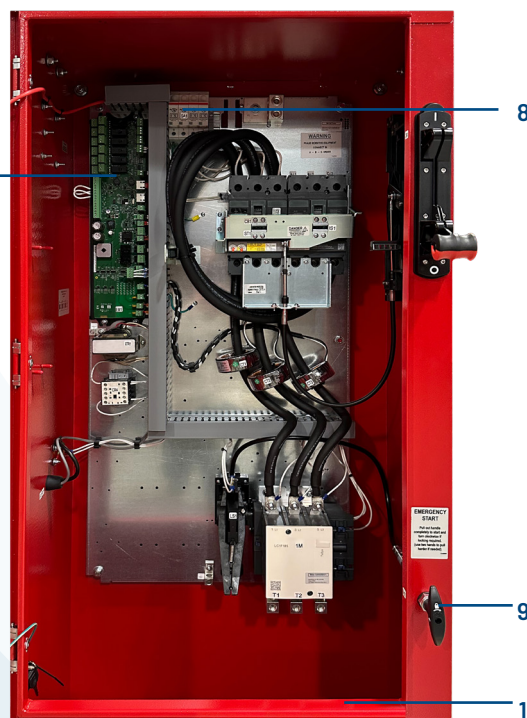
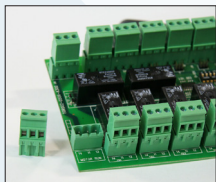
- ViZiTouch 2.1 operator interface
- IP55 enclosure
- Pressure and event recorder
- Voltage and amperage display
- Single operator for both isolating switch and circuit breaker
- Surge arrestor
- Lifting lugs
- Run test push button
- Emergency start handle
- Start and stop pushbuttons
- Locked rotor protector
- Phase reversal indication
- Remote start / deluge valve start provision
- Pressure transducer and run test solenoid valve externally mounted
- Gland plate
- Audible buzzer
- Alarm contacts for remote indication
- Programmable automatic shutdown (minimum run timer)
- Programmable sequential start timer (delay start timer)



	Tornatech Europe SA, Belgium
CE	Standard
SEISMIC COMPLIANT	Optional



1. Alarm buzzer
2. Externally mounted pressure transducer and run test solenoid valve with protective cover
3. Lifting Lugs
4. ViZiTouch 2.1 operator interface
5. Custom designed Isolation switch / Circuit breaker operator handle
6. Key lock
7. Remote alarm contacts with removable terminals
8. Surge arrestor
9. Custom designed emergency start mechanism with integrated limit switch
10. Gland plate



GPA MODEL SHOWN



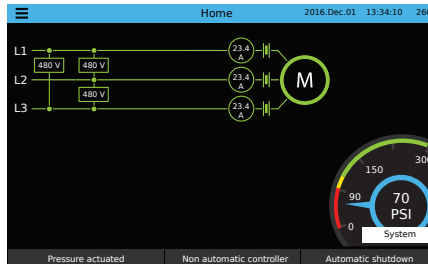


ViZiTouch 2.1 Operator Interface



HOME

Electric Fire Pump Controller



ON-SCREEN MENU

- Home
- Alarm
- Configuration
- History
- Service
- Manual
- Languages

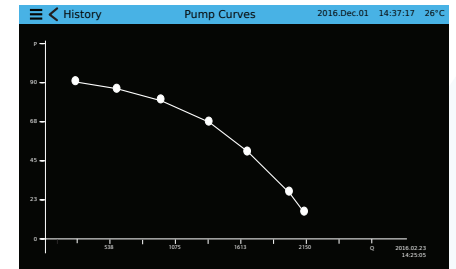
VIZITOUCH 2.1 MAJOR FEATURES INCLUDE:

- Touch screen operation with 7" color display and intuitive graphics
- Multi-language
- Upgradable software
- Password protected

HISTORY/STATISTICS

From	Since	2016.12.01	14:28:09
On Time		61-04-08-27	
Motor			
On Time		0-00-08-57	
Start Count		20	
Last Started On		2016.12.01	14:08:46
Pressure			
Minimum			99.1 PSI

PUMP CURVES



SETTINGS

Pressure: PSI, Max. Pres: 300, Cut-out: 150, Cut-in: 100

PT1: [Input Field]

Periodic test: Monday, 7, 30

Week Test: [Input Field], Duration (min): 5

RUN TEST: Duration (min): 10

Auto. Shutdown (m): Duration (min): 10

Date and time: 2016.Dec.01 14:09:55

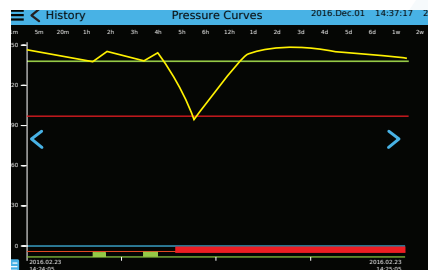
Advanced: [Input Field]

User login: [Input Field]

EVENTS

Date	Time	Event Description
2016.12.01	14:28:52	Under Voltage: ACTIVE
2016.12.01	14:28:23	Under Voltage INACTIVE
2016.12.01	14:28:09	Alarms Reset
2016.12.01	14:28:08	ACB in OFF or Tripped: INACTIVE
2016.12.01	14:12:06	Alternate is Tripped/Open: INACTIVE
2016.12.01	14:11:22	Pump On Demand: INACTIVE
2016.12.01	14:09:55	Control Voltage not Healthy: ACTIVE
2016.12.01	14:08:46	Generator: Started
2016.12.01	14:03:11	Motor: Started in Automatic
2016.12.01	14:03:03	Loss of Power: ACTIVE

PRESSURE CURVES



SERVICE

TORNATECH

The Americas: +1 518 336-0523, +1 800 363-8448 (Toll Free)

Europe: +32 (0) 30 84 40 01

Middle East: +971 1048 887 0615, Asia: +65 6785 8114

Commissioning date: 2016.12.01 14:28:52

Last service date: 2016.12.01 14:28:52

Service interval: 1 year

Next service due: 2016.12.01 14:28:52

Complete service: [Input Field]

Live view: [Input Field]

Nameplate Information

Jockey pump cut-out: 110

Jockey pump cut-in: 130

GPx-FM SERIES

WEIGHTS AND DIMENSIONS

GPA-FM / GPY-FM			
VOLTAGE	kW	Dimensions in mm	Approx. Weight in kg
380V - 415V	4 - 45	914 h x 508 w x 305 d	66
	55 - 75	1372 h x 610 w x 356 d	91
	90 - 160	1727 h x 914 w x 457 d	165
	200 - 250	1905 h x 1016 w x 508 d	180

SHORT CIRCUIT WITHSTAND RATING, VOLTAGE & kW

WITHSTAND RATING (SHORT CIRCUIT CURRENT)	380V TO 415V
STANDARD 100kA	3.7 - 220 kW
STANDARD 50kA	257 - 355 kW

HOW TO ORDER: GPx-FM - V / kW / Ph / Hz / Options

Ex.: GPAFM-400 / 55 / 3 / 50 / Options

AMERICAS

Tornatech Inc.

Head Office

Laval, Québec, Canada

Tel: + 1 514 334 0523

Toll free: + 1 800 363 8448

EUROPE

Tornatech Europe SA

Mont-Saint-Guibert, Belgium

Tel: + 32 (0) 10 84 40 01